

Technical characteristics

- Short time recordings acquisition
- Recorded measurements acquisition
- Remote monitoring data acquisition
- Automatic inquiry of on-field system
- Power supplies remote controlling
- Annual report management with Kt calculation
- Periodic measurements report
- Data exportable in Excel format
- SQL server database

CPWatch is the PC-Based software that allows to supervise with a PC a complete hardware and software system for a remote monitoring of cathodic protection, with data transmission based on GSM – GPRS network.

Remote control is entirely supported by the CP Watch (Cathodic Protection Watch) program, personalized upon customer specification.

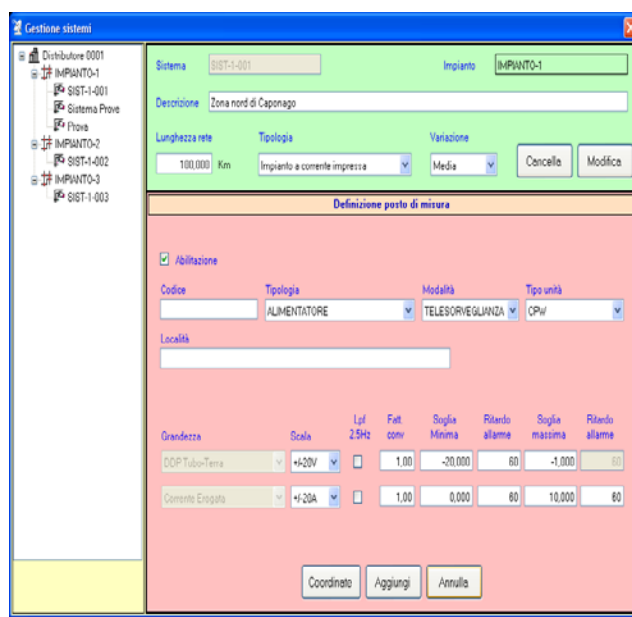
CP Watch software permits to execute all needed operations to manage a network composed by a virtually unlimited number of control devices (TDA3 Units and/or TDA4 GSM/GPRS Unit) and power supplies (CT36).

CP Watch software can be used in Windows 2000-XP-Vista operating system and permits to define, manage and maintain the entire system.

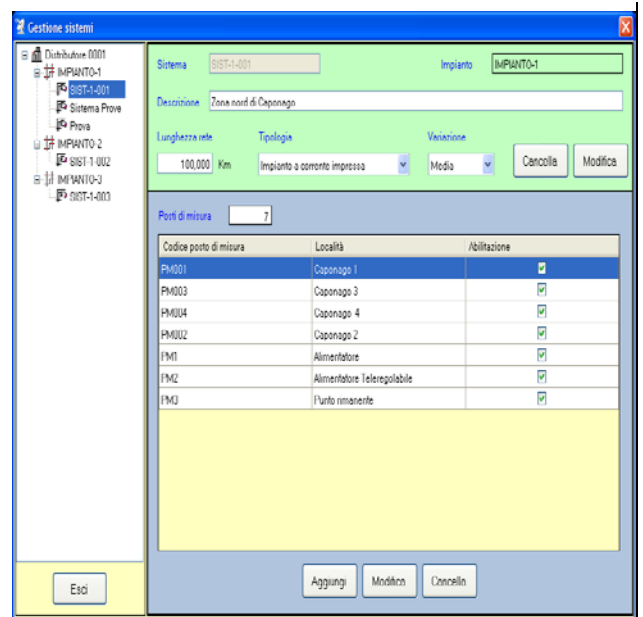
CP Watch is built around a SQL server database that permits to keep under control the details of a cathodic protection system as follows:

- General and detailed system description,
- Remote monitoring data acquisition,
- Manual measurement acquisition,
- Short time measurements
- Alarm historical archive, yearly reports, historical periodic reports.
- Protection values on graphic
- Annual report generation and “Kt” cathodic protection coefficient calculation.

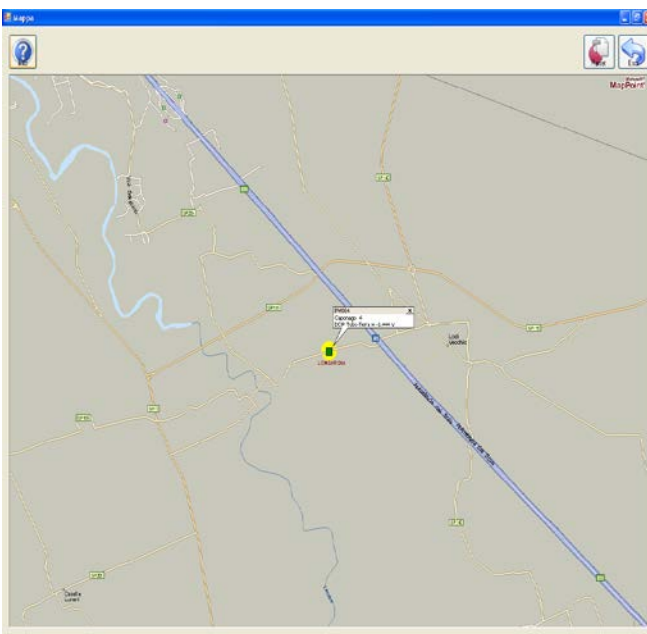
To better explain the CP watch performances some screenshots are reported in the following pages.



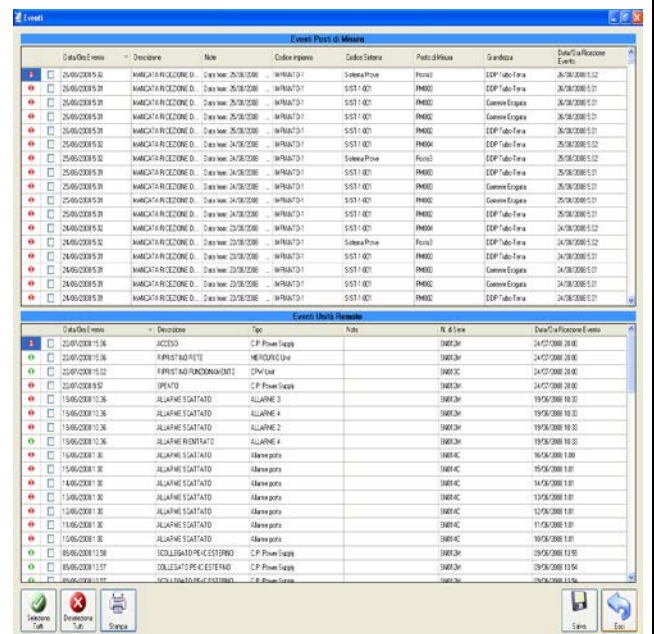
System anagraphics management window



Measurement point

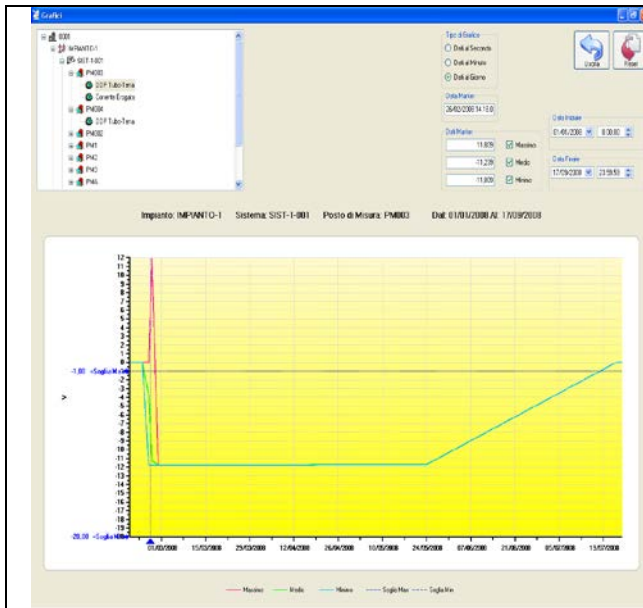


Measurement point geographic coordinates



Alarm events list

CPWatch: a PC-based software for Cathodic Protection Management



Graphics

Data/Time	Misura (V)	Tempo di Fase Positiva (Sec)	Tempo di Fase Negativa (Sec)	Temperatura (°C)	Umidità (%)	Tempi Totale Fase Positiva (Sec)	Tempi Totale Fase Negativa (Sec)
01/01/2008 09:59	0.171	0.142	0.142	23.5	0	5000	0
01/01/2008 09:59	0.175	0.142	0.142	23.5	0	5000	0
01/01/2008 09:59	0.175	0.142	0.142	23.5	0	5000	0
01/01/2008 09:59	0.175	0.142	0.142	23.5	0	5000	0
01/01/2008 09:59	0.175	0.142	0.142	23.5	0	5000	0
01/01/2008 09:59	0.175	0.142	0.142	23.5	0	5000	0
01/01/2008 09:59	0.175	0.142	0.142	23.5	0	5000	0
01/01/2008 09:59	0.175	0.142	0.142	23.5	0	5000	0
01/01/2008 09:59	0.175	0.142	0.142	23.5	0	5000	0
01/01/2008 09:59	0.175	0.142	0.142	23.5	0	5000	0

Historical measurement archives

Annual analysis and Kt calculation

Power Supply Remote control