

## General

Magnesium anodes are manufactured in a wide range of shapes and sizes to provide a great selection for cathodic protection of buried structures, storage tanks etc.

They are available in two grades, high purity and high potential. The letter are primarily for use in high resistivity soil.

To reduce the anode contact resistance to soil, they can be supplied packaged in a cotton bag containing a backfill of Gypsum Bentonite and Sodium Sulphate.

Alternatively the backfill can be provided loose for site application in a variety of composition.

Anodes with backfill must be dipped into water for a minimum of twelve hours just before being grounded.

## Standard backfill composition

Powdered Gypsum 75%

Granular Bentonite 20%

Sodium Sulphate 5%

The anode and the backfill are contained in a cotton bag; other composition are available upon request.

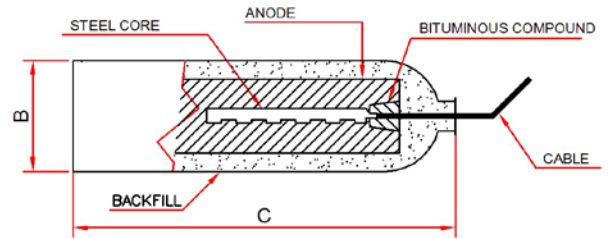
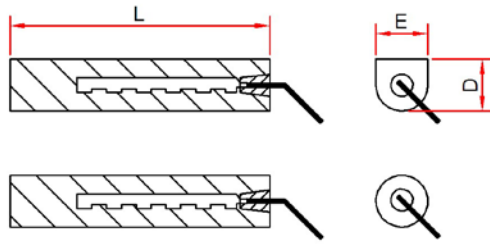
## Cable specification

Unless otherwise requested, anodes are normally supplied completed with 3 meters 6 mm<sup>2</sup> PVC insulated copper cable. Alternative sizes and length are available upon request.

Anodes can be supplied in either D section or circular section.

## Note

Other anode shapes and sizes are available on request.



Weight		ANODE Dimensions		PACKAGED DIMENSIONS		TOTAL PACKAGED WEIGHT
Lbs.	Kg	∅ mm	L mm	B mm	C mm	Kg
9	4,1	89	203	154	403	9,1
17	7,7	114	457	174	658	16,4
22	10,0	114	533	174	733	17,7
32	14,5	146	508	206	708	31,8
34	15,5	146	533	206	733	32,7
50	22,7	178	508	245	733	56,0
60	27,3	178	610	245	920	64,5

CIRCULAR SECTION

D X E						
9,9	4,5	65x80	500	130	800	9
13,2	6,0	90x110	500	160	800	12
18,7	8,5	70x120	500	170	900	18
37,3	17,0	140x150	470	220	800	36

"D" SECTION

ALLOY COMPOSITION		
COMPONENTS	AZ 63 ALLOY	HIGH POTENTIAL ALLOY
Al	5,3 + 6,7	0,01 max
Mn min.	0,15	0,5 + 1,5
Zn	2,5 + 3,5	0,02 max
Cu	0,02 max	0,02 max
Si	0,10 max	---
Fe	0,005 max	0,03 max
Ni	0,003 max	0,001 max
Other	0,3% max	
Mg	Remaining	Rimanente
Potential	1,50 V Ag/Ag CL Ref	1,70 V Ag/Ag CL Ref
Capacity A/h	1230 per Kg 560 per Lbs	1230 per Kg 560 per Lbs
Efficiency	50 %	50 %

## Other configurations

A range of extruded flexible ribbon magnesium anodes with a continuous steel core is available for the protection of complex shaped structures and for temporary cathodic protection.

A range of extruded magnesium rods with steel wire core is available for marine structures, storage and condenser boxes appliances.

### Telemagnetica S.r.l.

Via Teocrito, 36 - 20128 Milan - Italy

Tel.+39-022552900 - Fax +39-022553097

E-Mail: [info@telemagnetica.com](mailto:info@telemagnetica.com) – Http:\\ [www.telemagnetica.com](http://www.telemagnetica.com)